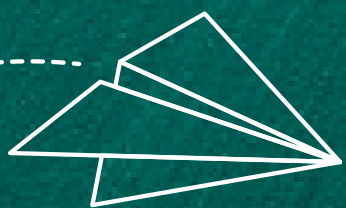


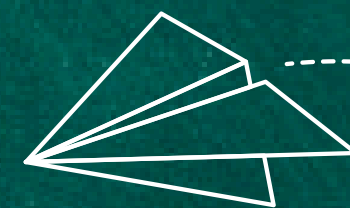
Cults Academy

P7-S1 Transition

Parent Information Evening

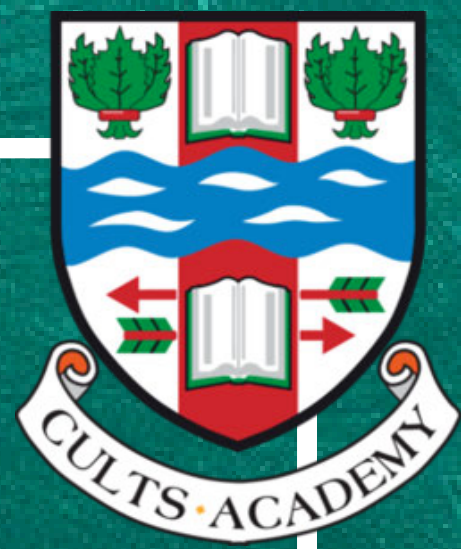


Slides will be shared - no need to take notes!

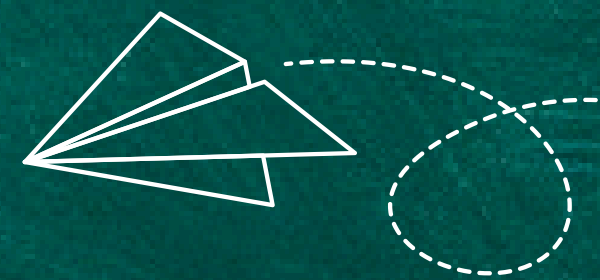
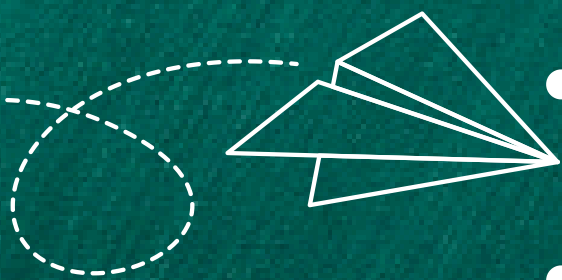




Welcome to S1 at Cults Academy

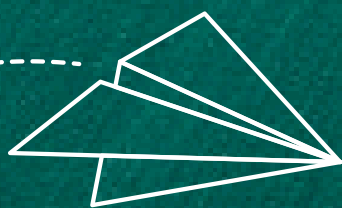


- Welcome to Cults Academy - Mr Allan, Head Teacher
- Parents as Partners - Mr Montenegro & Mrs McDonald
- Your New School - Mr Allan
- Hear from our Experts - S1 Pupils
- Support - PT Pastoral Support
- Induction day information - Mrs Makepeace





Welcome to Cults
Academy



Our Shared Vision & Values for Cults Academy

YOUNG PEOPLE AT THE
HEART 
OF ALL THAT WE DO

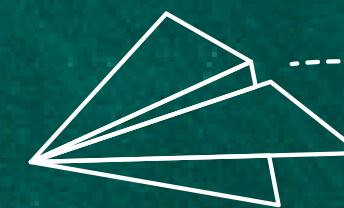
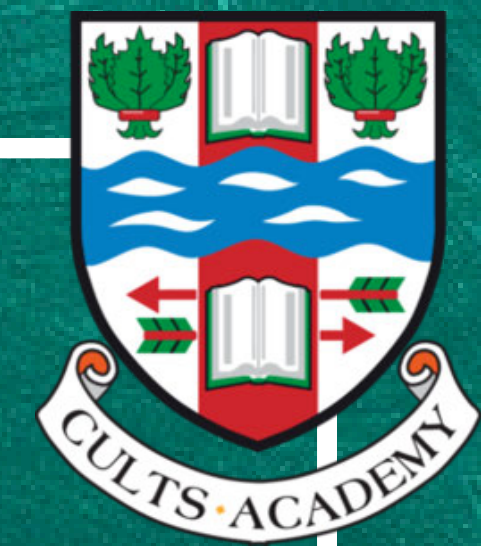
At the H E A R T:

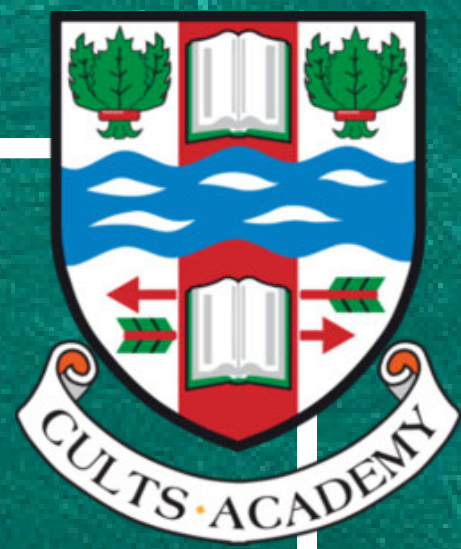
- ⊕ HAPPINESS, HEALTH & SUSTAINABILITY
- ⊕ EXCELLENCE
- ⊕ ACHIEVEMENT
- ⊕ RIGHTS RESPECTING
- ⊕ TEAMWORK & RELATIONSHIPS

We value:

- ♥ RESPECT
- ♥ KINDNESS
- ♥ RESILIENCE
- ♥ FAIRNESS
- ♥ RESPONSIBILITY

We aim for all pupils to feel valued in an environment that gives them the opportunity to become successful learners, confident individuals, responsible citizens and effective contributors to society.

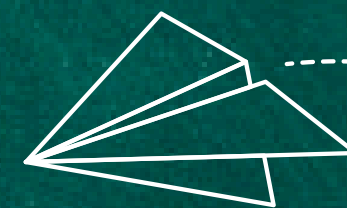
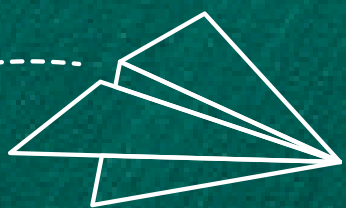




Parents as Partners



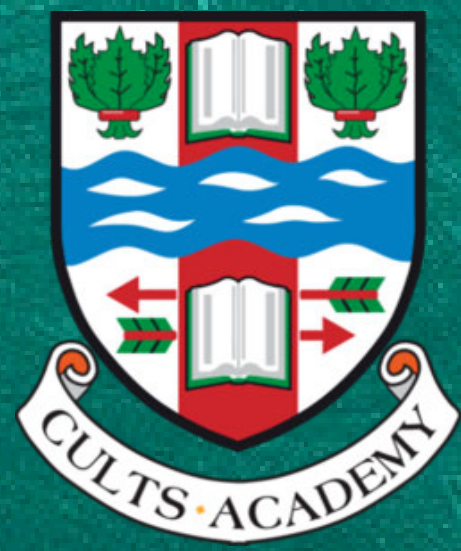
- Parent Teacher Association (PTA)
- Parent Council



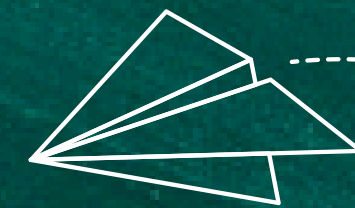
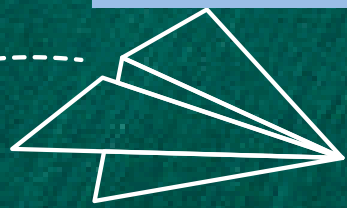


Cults Academy

Curriculum Structure

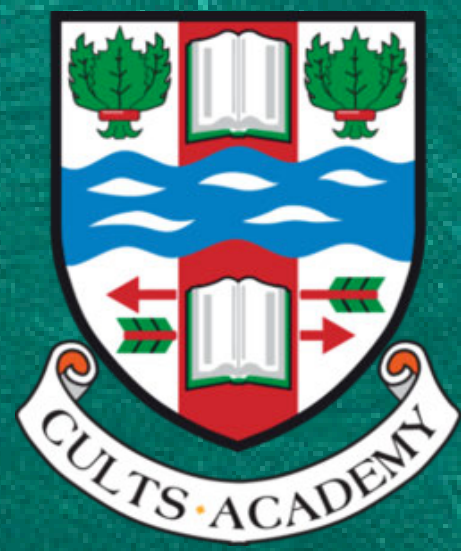


S1	Broad General Education
S2	
S3	8 x National Courses
S4	
S5	5 National, Higher or other SCQF courses
S6	3-5 National, Higher, Advanced Higher or other SCQF courses

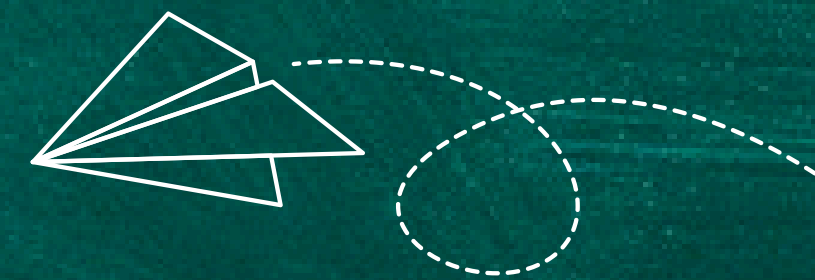
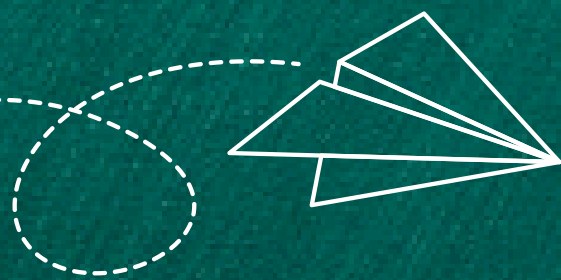




Cults Academy



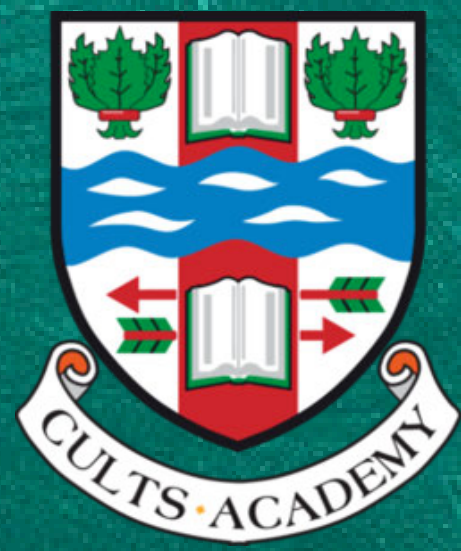
08.30 – 08.42	TUTORIAL	12 Minutes
08.42 – 09.35	Period 1	53 Minutes
09.35 – 10.28	Period 2	53 Minutes
10.28 – 10.48	INTERVAL	20 Minutes
10.48 – 11.41	Period 3	53 Minutes
11.41 – 12.34	Period 4	53 Minutes
12.34 – 13.24	LUNCH	50 Minutes
13.24 – 14.17	Period 5	53 Minutes
14.17 – 15.10	Period 6	53 Minutes





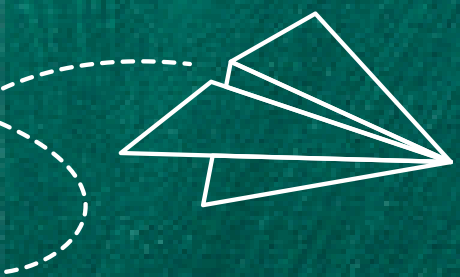
Cults Academy

Uniform Expectations (August)



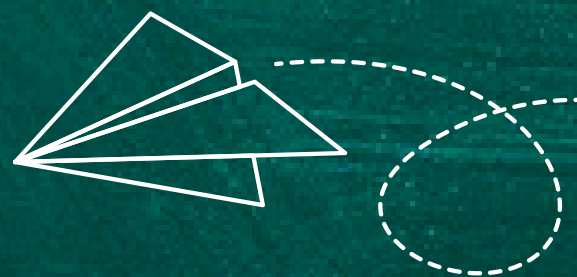
Expectations:

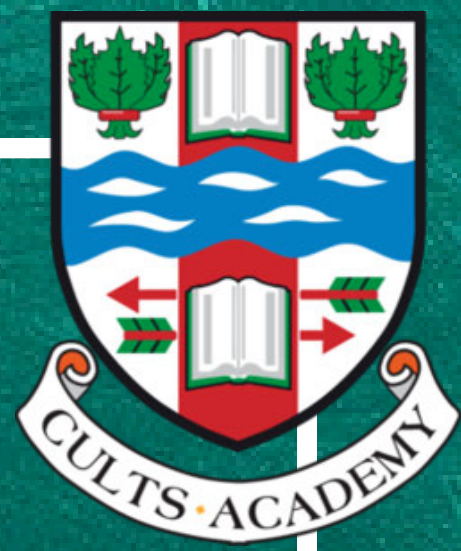
- School blazer (Optional April-September)
- Shirt or blouse (White)
- School tie
- School trousers or skirt (Black)
- School footwear (Black) (a change for PE is required)



Please support us by avoiding the following items:

- Jeans, Jogging bottoms or leggings
- Hoodies
- Large logos
- PE kit to be worn to other classes on PE days

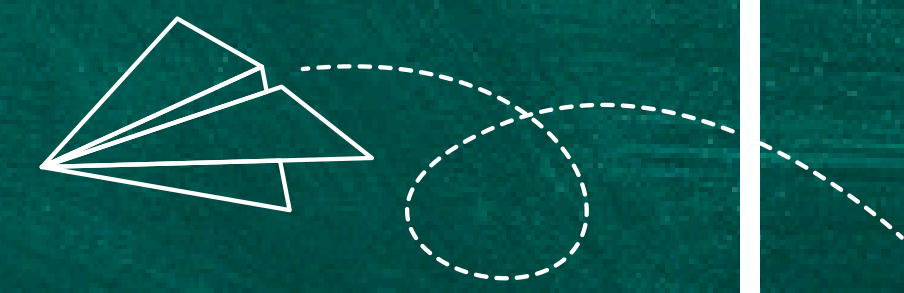
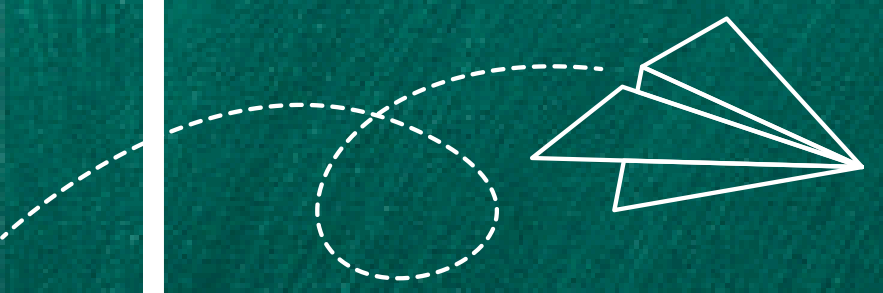




Welcome to S1 at Cults Academy

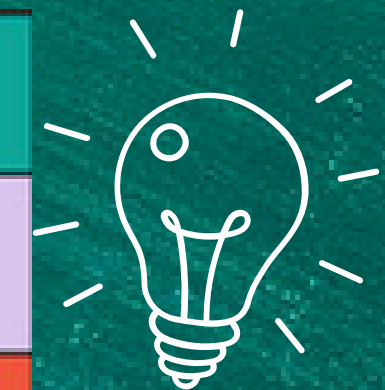
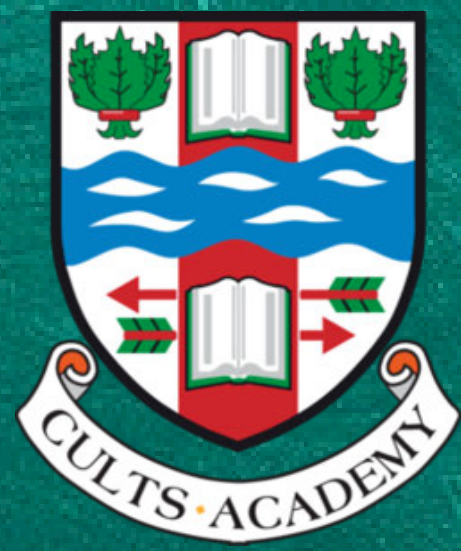


Hear from our experts...

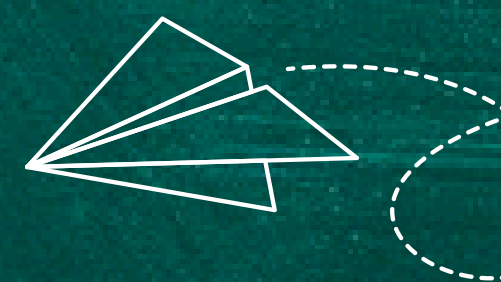
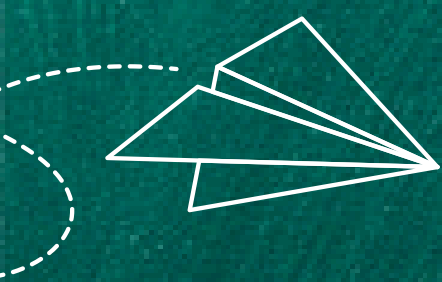




Cults Academy - S1



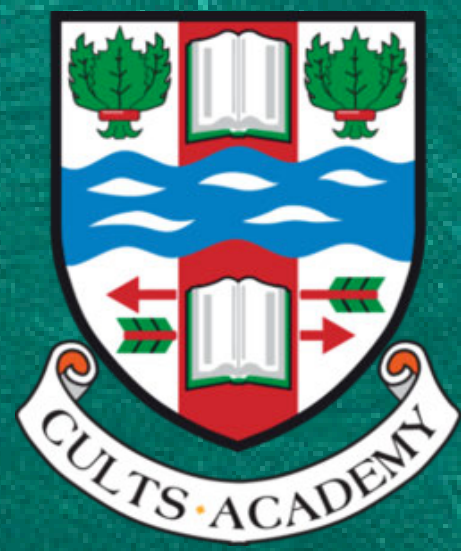
HOUSE	PUPIL SUPPORT TEACHER	DEPUTE HEAD
Blairs	Mr Leith/Mr Bain	Mrs Makepeace
Cairn	Mr Milne	Mrs Duggan
Devenick	Miss Dye	Mrs Makepeace
Friarsfield	Mrs Robertson	Mr Tullock
Hillview	Mrs Johnson	Mrs Duggan
Murtle	Mrs Kidd	Mr Tullock
Ronan	Mr Higgins	Mr Cowling





Cults Academy

Universal Support



Office Staff

Tutor Teacher

Subject Teachers

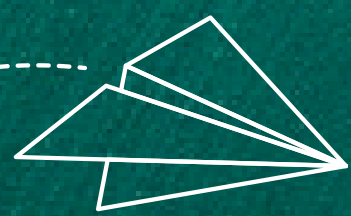


School Nurse

Pupil Support
Assistants

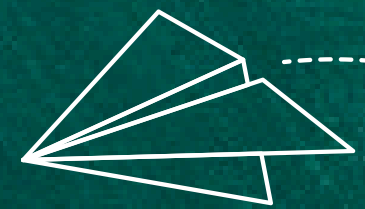
Pastoral Support
Teacher

Senior Pupils



Active Schools Staff

Librarian



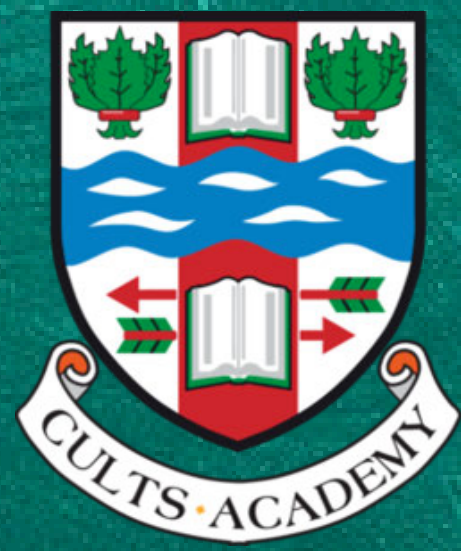
Support for Learning Teachers

Senior Leadership Team



Cults Academy

Targeted Support



Pastoral Support Teacher

PT Support for Learning



Support for Learning Teachers



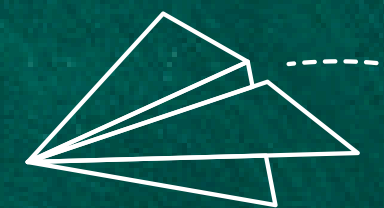
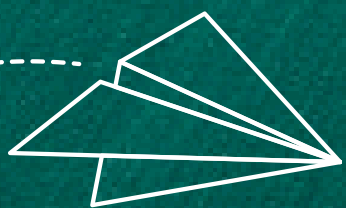
Pupil Support Assistants

School Nurse

Partners

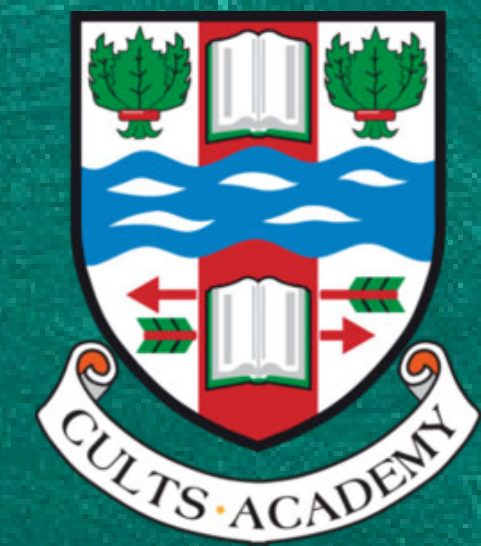
Subject Teachers

Tutor Teacher

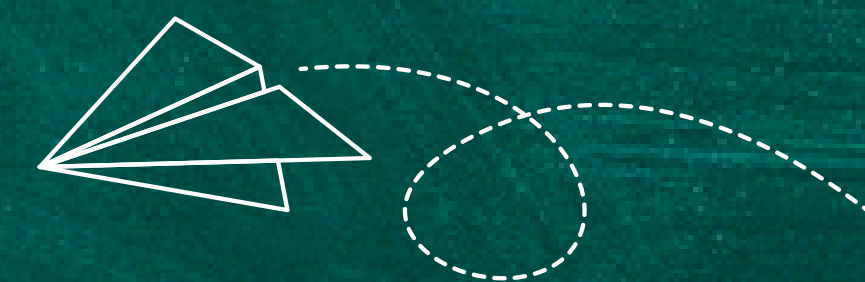
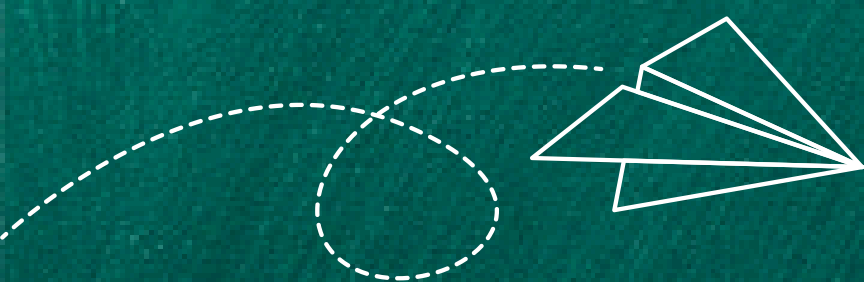




Cults Academy Communication

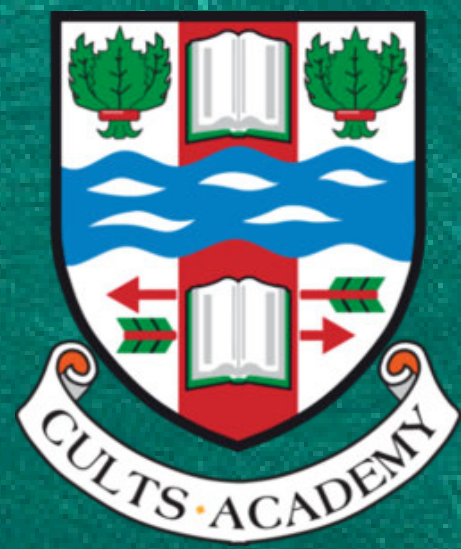


- Calendared reporting
 - Reports - 2 tracking, 1 full
 - Parents' Night
- Parents' Information Evenings
 - Open Doors
- Head Teacher weekly update
- Groupcall messages
- Learning updates
- School website

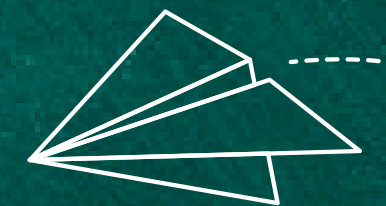
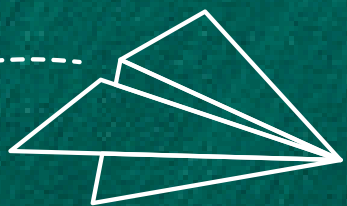




Cults Academy - S1



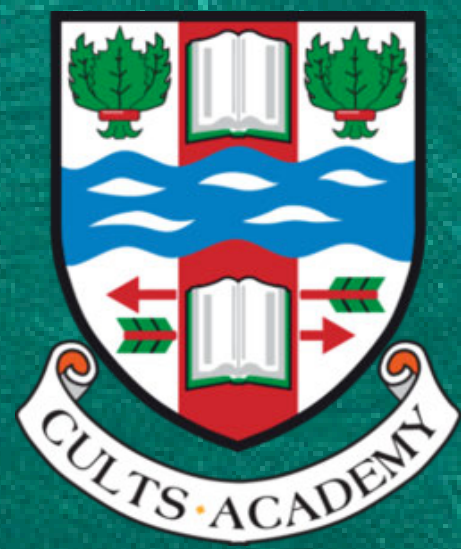
S1	LANGUAGES	LANGUAGES	MATHEMATICS	SOCIAL SUBJECTS	SCIENCE
	English (5)	French (2) Spanish (1)	Mathematics (4)	Integrated Course (3)	Integrated Course (3)
	EXPRESSIVE ARTS	HEALTH & WELLBEING	TECHNOLOGIES	RMPS	
Art (1) Music (1) Drama(1)	PE (2) HE (2) PSE (1)	D&T (1) Technologies (2)	RME (1)		



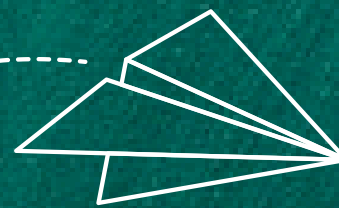


Cults Academy

Induction Days



- Transport
 - Arrive for 0825
 - Pupils leave at 1510
- Usual Primary Uniform should be worn
- ParentPay
 - Ensure funds have been added to the "Academy" account
 - Tell your child their 4 digit PIN
- Medication
- Please provide PE kit if needed



FULL PE KIT MEANS:

To be classed as having PE kit, pupils must have:



Change of top



Change of bottoms (shorts/ leggings/ joggers/ tracksuit bottoms)



Suitable change of shoes



Hair tied back

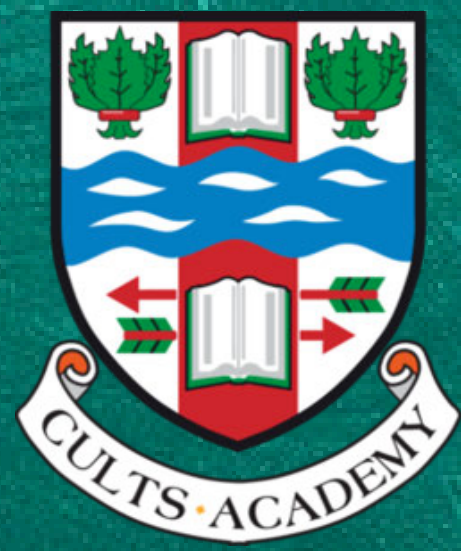


Jewellery and watches removed

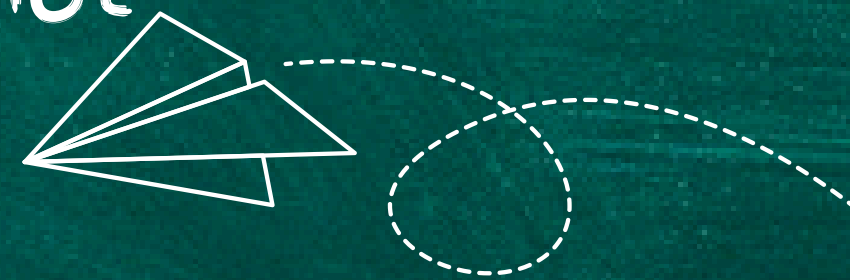
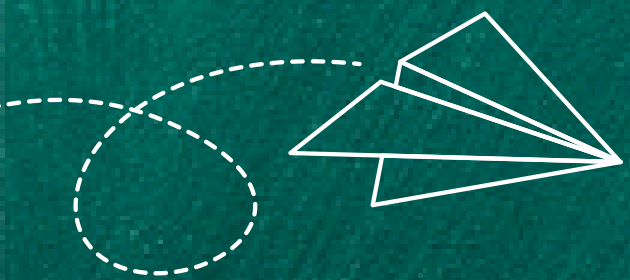


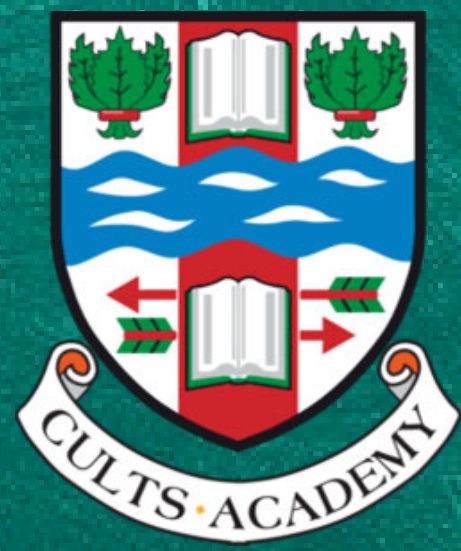
Cults Academy

Induction Days



- Thursday 18th and Friday 19th June
 - 0830-1510
- Thursday
 - Assembly hall - PT Pastoral Support and Buddies
 - Classes periods 2-6
- Snack, water bottle and packed lunch if not buying food in school
- Lunchtime activities available
- Friday - 0825 - Muster point to take pupils to tutor class





More information about August will be shared
before the holidays



Tonight's slides will be shared

Questions in the meantime:

cultsacademy.enquiries@ab-ed.org

